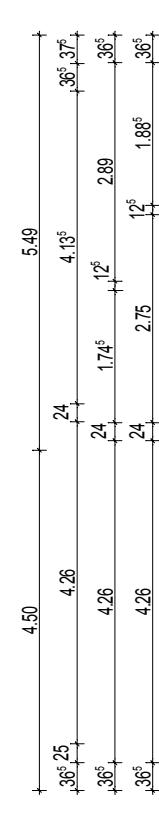
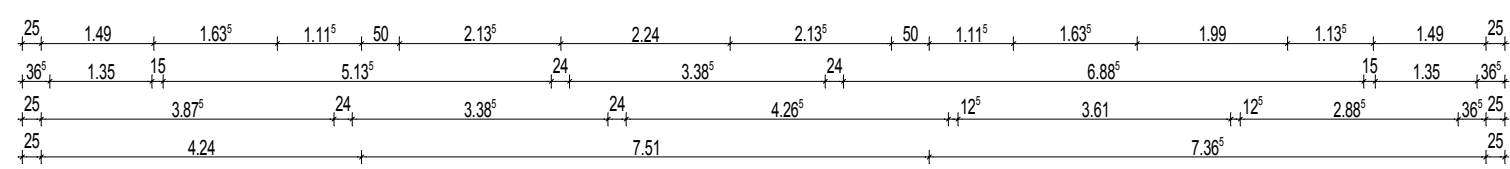
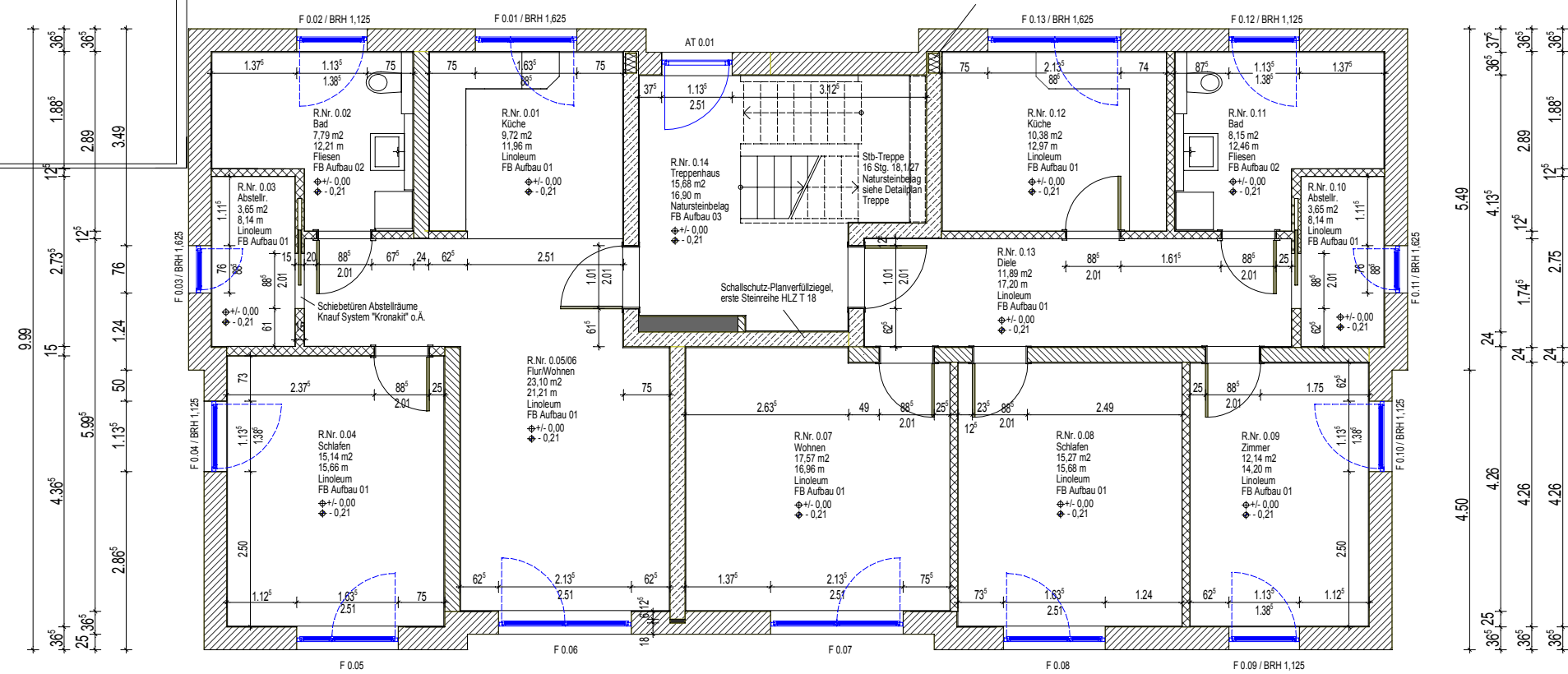
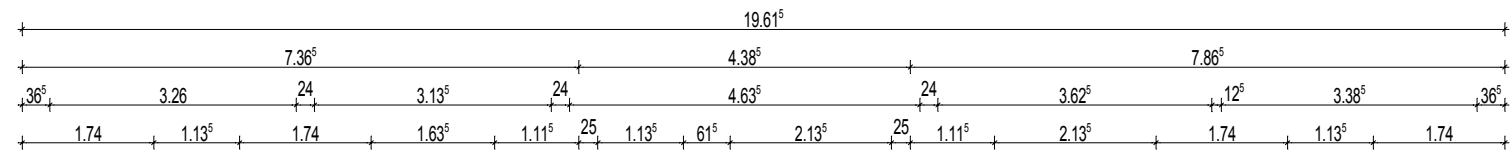


Anschluss geplante Technikgarage an Gebäude 1



- Außenmauerwerk SFK 6, ESZ 9, LM21, nicht geklebt
- HLZ SFK 12, RDK 1.0, MG IIa, nicht geklebt
- Schallschutz-Planverfüllziegel, PFZ - T 24
- GK Ständerwand, 125/150 mm beidseitig beplankt

